

**Heavy Duty Cable Tray**  
(in accordance with BS 61537:2007)

Ref.	Tray Width mm
KLHR50T	50
KLHR75T	75
KLHR100T	100
KLHR150T	150
KLHR225T	225
KLHR300T	300
KLHR450T	450
KLHR600T	600

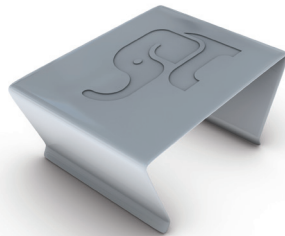
**Available finishes include:**  
Pre-galvanised to BS EN 10346:2009  
(standard references throughout brochure).  
Powder coated (prefix reference with CP).



**UNIKLIP**

Bag Ref. KLIPPKT  
Box Ref. KLIPBOX

Available in bags of 40  
or boxes of 200.



Uniklip is supplied with fittings and couplers.

**Tray Divider**

Ref. KLHR/DF

Length = 3000mm.



**Tray to Channel Klip**

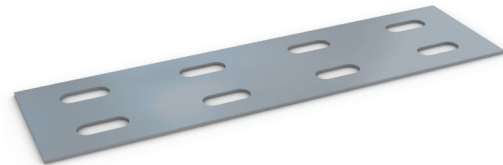
Ref. CHTR 50



**Fish Plate**

Ref. FP 150-600

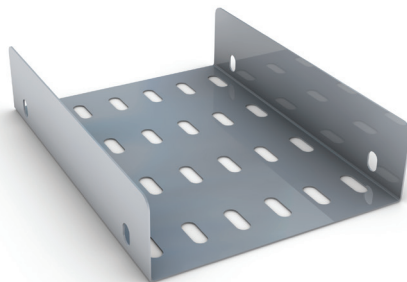
Length = 200mm.



**Fish Plate Coupler**

Ref. KLHR/FPC 50-600

Length = 200mm.



**Straight Coupler**

Ref. KLHR/SC

Length = 200mm.  
Sold in pairs.

